



ATTA membership application form

You may either use this form or apply online

I wish to apply for membership with the *Australian Timber Trainers Association Ltd*

Name:

Postal address:

.....

State: Postcode:

Company:

Position:

Home phone:

Mobile phone:

Business phone:

Email address:

Website:

Areas of expertise/interest in the industry:

.....

.....

Please see over page



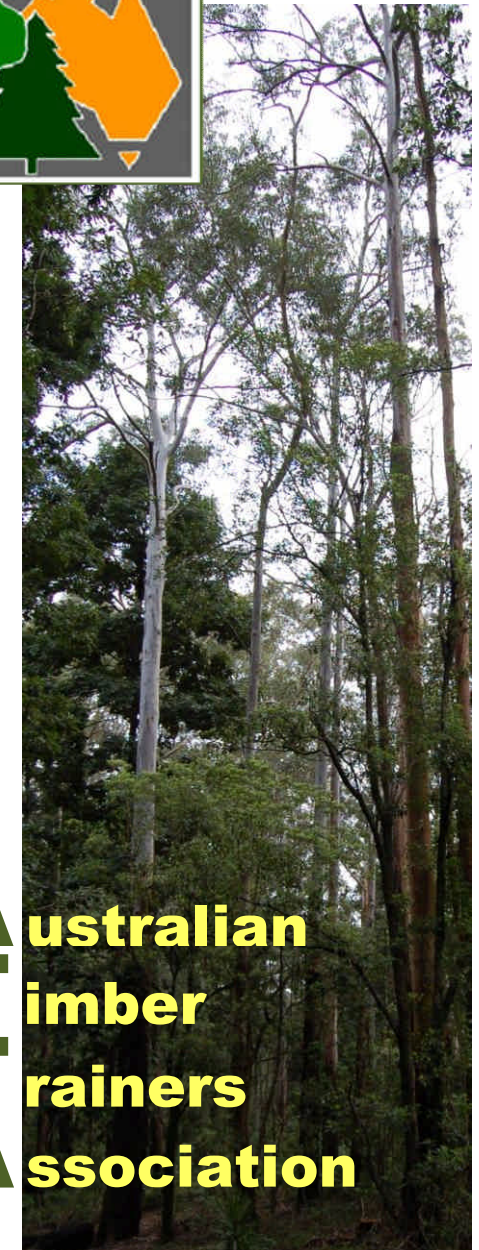
Enquiries:

info@atta.org.au

ATTA Secretary
PO Box 1954
Strawberry Hills NSW 2012



www.atta.org.au



Australian
Timber
Trainers
Association

Why join ATTA?

There are various reasons why you might want to join ATTA.

These include:

- being invited to attend the best value-for-money conference in Australia – the annual *ATTA Workshop*
- developing new contacts with other trainers and assessors in the industry
- using the annual Workshop as a professional development activity, and keeping up-to-date with the latest training issues and events
- accessing training information via the ATTA website



Who we are

The **Australian Timber Trainers Association Ltd** (ATTA) is a national network of forest industry trainers and assessors.

Our members work in all sectors of the industry, including:

- forest growing and management
- harvesting and haulage
- sawmilling and processing
- timber manufactured products, such as frame and truss and furniture manufacture.

Our belief is that the best way to achieve a strong and sustainable forest industry is to educate its workforce, so that operators can continue to develop their skills in the use of safe, efficient and environmentally sound work practices.

For more information about ATTA or any of its services, please go to the website:

www.atta.org.au

or email your enquiry to:

info@atta.org.au

Applicant's declaration

As a member of ATTA, I agree to be bound by the Memorandum and Articles of the Association (for more details, go to: www.atta.org.au)

Signature:

Date:

Membership fee

Annual fee: \$75.00 (GST exempt)

Payment method:

Cheque Please enclose cheque with this form.

EFT Please email secretary@atta.org.au for account details.

Cut off this membership application form, and post to:

ATTA Treasurer
PO Box 482
EDEN NSW 2551

Australian Timber Trainers Association Ltd
ABN: 51 056 545 727 ACN: 056 545 727